

FTP / WebDeploy / WebDAV

Manual

Table of Contents

Introduction

FTP

WebDeploy

WebDAV

Instructions

FTP

Windows

Mac

WebDeploy

Windows

WebDAV

Windows

Mac

Introduction

FTP

If you have selected access via FTP, you can download your data to our server using any FTP program.

FTP is a file transfer protocol that makes it easy to download files from servers anywhere in the world - or the reverse - to upload them to servers all over the world.

You have one or more password protected FTP access points of your own to our or your virtual server. Password protection is necessary to keep unauthorised persons from accessing your directory and changing or deleting your data. The advantage of your own FTP access is that you can change your pages without our assistance, as often as you want. All changes are available online in the internet immediately after you transfer them!

You can manage FTP-users directly in the System Configurator.

WebDeploy

WebDeploy (Web Deployment Tool) makes migration, management and supply of IIS-webservers, web applications and websites easier.

Microsoft WebMatrix is available to implement it.

Using Microsoft WebMatrix, you can easily create new websites based on a template or an existing, free open-source application. These websites can then be published in the internet.

WebDAV

WebDAV (Web-based distributed authoring and versioning) is an open standard for preparing data in the internet. With it, users can access their data as they would on an online hard drive. Technically speaking, WebDAV is an expansion of the protocol HTTP/1.1, that removes certain restrictions from HTTP. Until now, online forms have for the most part only offered the ability to upload single files (HTTP-POST). With WebDAV entire directories can be transferred.

WebDAV, you can directly activate in the System Configurator (from w134 or higher).

Instructions

FTP

Windows

FileZilla

Proceed as follows:

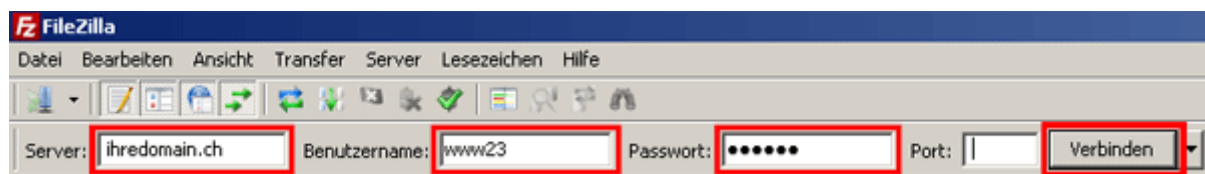
- 1 If you do not have an FTP program, download e.g. the program FileZilla. You can find the program under the following link:

[FileZilla Download](#)
- 2 Install the FileZilla FTP-program according to the manufacturer's instructions.
(The installation of additional software is not necessary and can usually be deactivated during the installation.)
- 3 Start the FileZilla FTP-program.
- 4 Under "Server", enter your domain name without www.
(Note: Until your domain name is activated, use your RealTime host name. You will find this under your access confirmation (e.g. WL15WWW23.WEBLAND.CH).

As "username" enter the username according to your access confirmation (WebServer Login Data, e.g. www23)

As password, enter the password according to your access confirmation (WebServer Login Data).

Click on "connect" in order to establish the FTP connection.

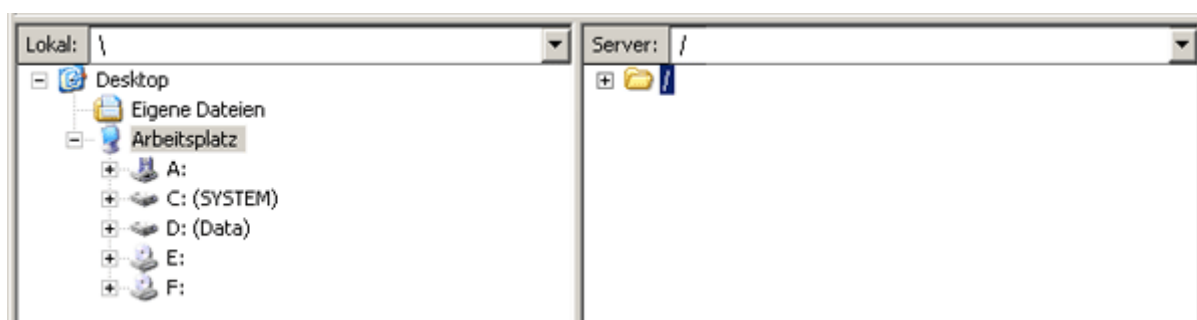


- 5 You will see the files in your local directories in the left window. On the right side you will see the directory structure for your web server. Click on the "plus" sign.

Now go into the left window and select the directories and files that you want to load on your server.

You can now "drag & drop" the files (onto the right side) and load them on your server.

You can get additional support under [FileZilla quick guide](#)



Attention! It may be necessary to set up a proxy for some online services. If you cannot establish a connection with our server, contact your ISP's help hotline in order to find out what you need to do in order to set up an FTP connection to upload files to an external server. Companies that have a network that directly connects with the internet use so-called firewalls for their own protection. These firewalls can be set up such that FTP connections are not possible or are only possible with highly specialised settings. In this case, you need to contact your system administrator.

WS_FTP

Proceed as follows:

- 1 If you do not have the WS_FTP program yet, then contact us by e-mail so that we can send the software to you:

support@webland.ch

- 2 Establish the internet connection with your ISP or online service.
- 3 Start the FTP-program.

- 4 Click on "New" in order to establish a new FTP connection.

Give this connection a name under "Profile Name", e.g. your domain name.

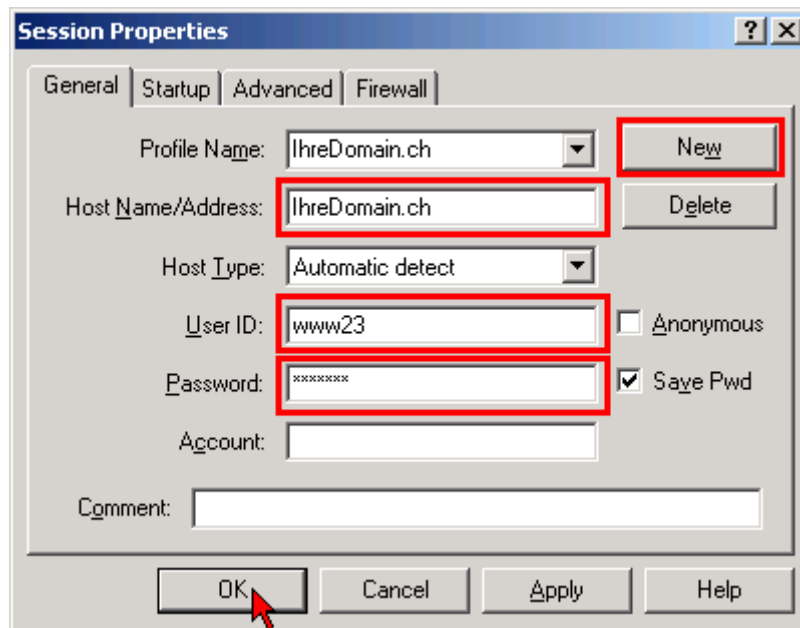
Enter your domain name without www under "Host Name/Address" (Note: Until your domain name is activated, use your RealTime host name. You will find it on your access confirmation (e.g. WL15WWW23.WEBLAND.CH)).

Under "Host Type", select "Automatic Detect".

Enter your username according to our access confirmation (WebServer Login data) as your "User ID" (e.g. www23).

Enter your password according to our access confirmation (WebServer Login data) as your "Password".

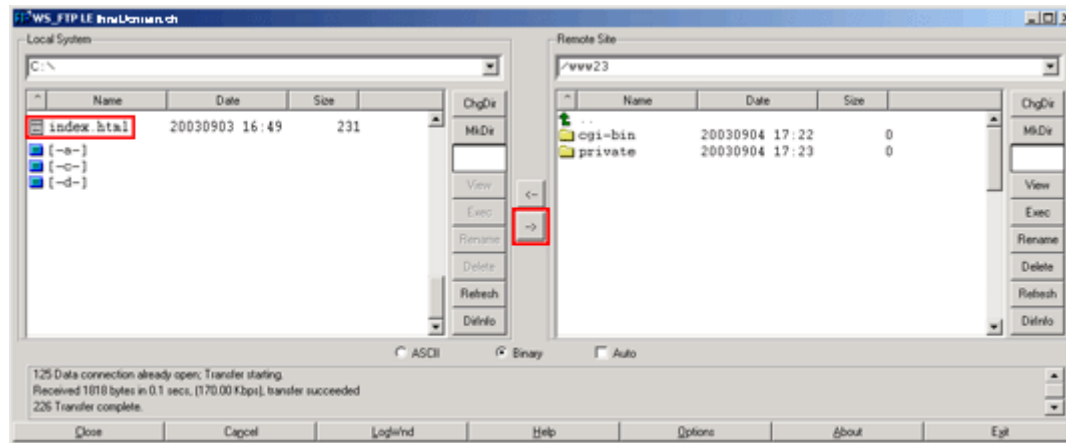
Click on "OK" in order to establish the FTP connection.



- 5 In the left window you will now see the files in your local directories. On the right side, you will see the directory structure for your server.

Go into the left window and select the directories and files that you want to load on your server.

Your pages will be downloadable on the internet immediately after the upload.



Attention! It may be necessary to set up a proxy for some online services. If you cannot establish a connection with our server, contact your ISP's help hotline in order to find out what you need to do in order to set up an FTP connection to upload files to an external server. Companies that have a network that directly connects with the internet use so-called firewalls for their own protection. These firewalls can be set up such that FTP connections are not possible or are only possible with highly specialised settings. In this case, you need to contact your system administrator.

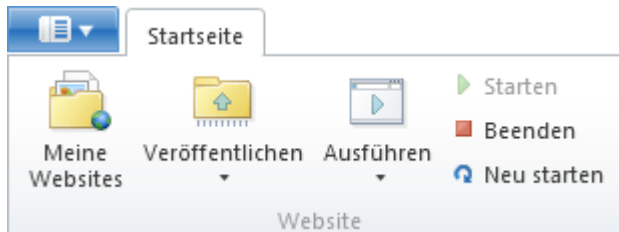
WebMatrix

Proceed as follows:

- 1 If you do not yet have a copy of the WebMatrix program, download it using the following link:

[WebMatrix Download](#)

- 2 Install the program following the manufacturer's instructions.
- 3 Start the WebMatrix program.
- 4 Select the icon "Publish" in the directory "Starting Page"



- 5 Select "FTP" under "Protocol".

Enter your domain name without www. under "Server".

(Note: Until your domain name is activated, use your RealTime host name. You will find it on your access confirmation (e.g. WL15WWW23.WEBLAND.CH)).

Leave the field "Website Pathway" empty.

Enter your username according to our access confirmation (WebServer Login data) as your "Username" (e.g. www23).

Enter your password according to our access confirmation (WebServer Login data) as your "Password".

Under "Target URL", enter your domain name in the form: "http://yourdomain.ch/".

You may activate the control box "Save Password" if you want.

- 6 Now check the connection by selecting the button "Test Connection".

Veröffentlichen - Einstellungen

Protokoll:

Server:

Websitepfad:

Benutzername:

Kennwort:

Ziel-URL:

Kennwort speichern

Allgemeine **Aufgaben**

-  [Webhostinganbieter suchen](#)
-  [Veröffentlichungseinstellungen importieren](#)

- 7 A successful connection will be shown with "Connection successfully established".

Verbindung erfolgreich hergestellt

- 8 Select "Save" to save your data.

- 9 A test will now be run automatically. Answer with "Yes".

Veröffentlichungskompatibilität

WebMatrix lädt einige Dateien nach `wl34www4.webland.ch` hoch, um die Kompatibilität mit der Website zu testen. Diese Dateien werden nach dem Test automatisch gelöscht. Klicken Sie auf "Ja", um fortzufahren, oder auf "Nein", um den Test zu überspringen.





[Text in Zwischenablage kopieren](#)

<input type="button" value="Ja"/>	<input type="button" value="Nein"/>
-----------------------------------	-------------------------------------

- 10 You will see the results. An exclamation point next to "Database" is normal, since no databases can be uploaded there using FTP.
Use "WebDeploy" as your publication type.
Click on "Next" to publish the data.

Veröffentlichen - Kompatibilität

Dies sind die Ergebnisse der Überprüfung der Websitekompatibilität

 Datenbank (wordpress)	Unbekannt
 Einfache HTML-Seite	Verfügbar
 PHP	Verfügbar
 MySQL-Treiber für PHP	Verfügbar

[Weitere Informationen zu diesen Tests](#)

<input type="button" value="Weiter"/>	<input type="button" value="Abbrechen"/>
---------------------------------------	--

Attention!

Firewalls can be set up such that FTP connections are not possible or are only possible with very specialised settings. In this case, you need to contact your system administrator.

Dreamweaver

Proceed as follows:

- 1 Establish the internet connection to your ISP or online service.
- 2 Start Dreamweaver.
- 3 Under the "Site" -> "Edit Sites" menu, select the site you want to edit. In the "Advanced" Tab, enter the following:

Under "Access", select FTP.

Enter your domain name as the FTP host.

(Note: Until your domain name is activated, use your RealTime host name. You will find it on your access confirmation (e.g. WL15WWW23.WEBLAND.CH)).

Under "Login" enter the username according to our access confirmation (Webserver login data, e.g. www.23).

Enter the password according to our access confirmation as "Password" (Webserver login data).

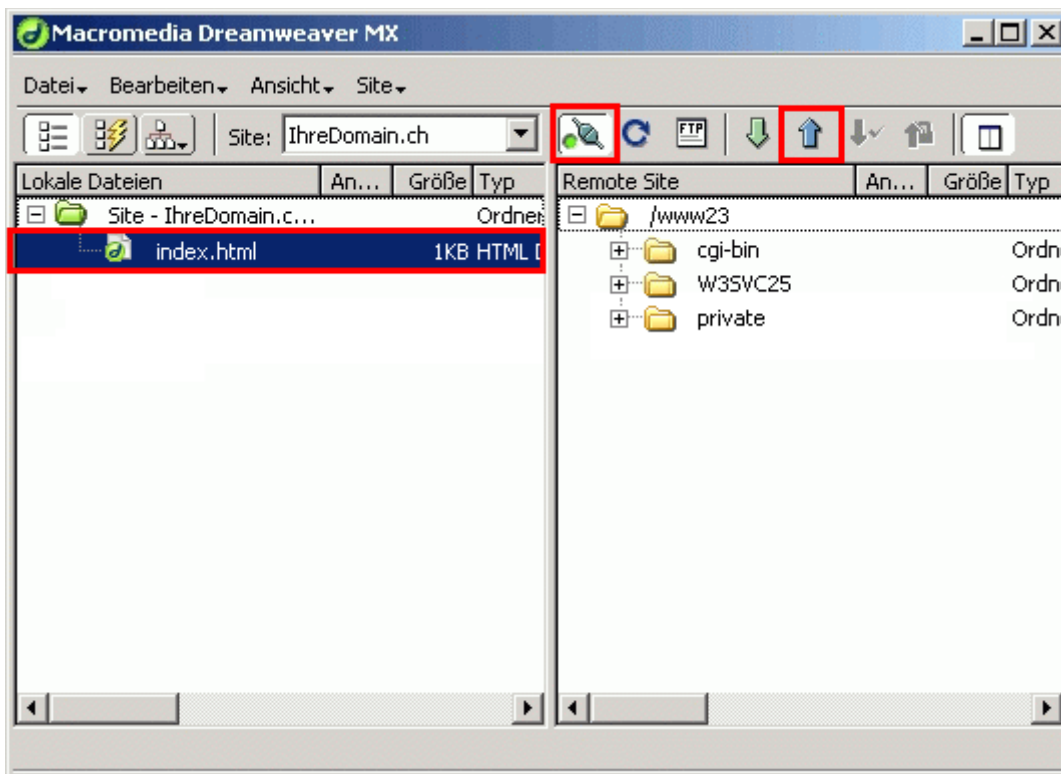
Then click on "OK" to establish the FTP connection.



4 Establish the FTP connection with your server

Select the directories and files that you want to transfer using your mouse and click on the arrow that points from the directory on your computer to the directory on our server (generally the arrow from bottom to top). Now all of the selected files will be transferred.

Your pages will be available on the internet immediately after the upload.



Attention! It may be necessary to set up a proxy for some online services. If you cannot establish a connection with our server, contact your ISP's help hotline in order to find out what you need to do in order to set up an FTP connection to upload files to an external server. Companies that have a network that directly connects with the internet use so-called firewalls for their own protection. These firewalls can be set up such that FTP connections are not possible or are only possible with highly specialised settings. In this case, you need to contact your system administrator.

GoLive

Proceed as follows:

- 1 Establish the internet connection to your ISP or online service.
- 2 Start GoLive.

3 Select "Server" in the "Edit" menu.

Click on the "New Object" icon.

You can give this connection a name under "Pseudonym", e.g. your domain name.

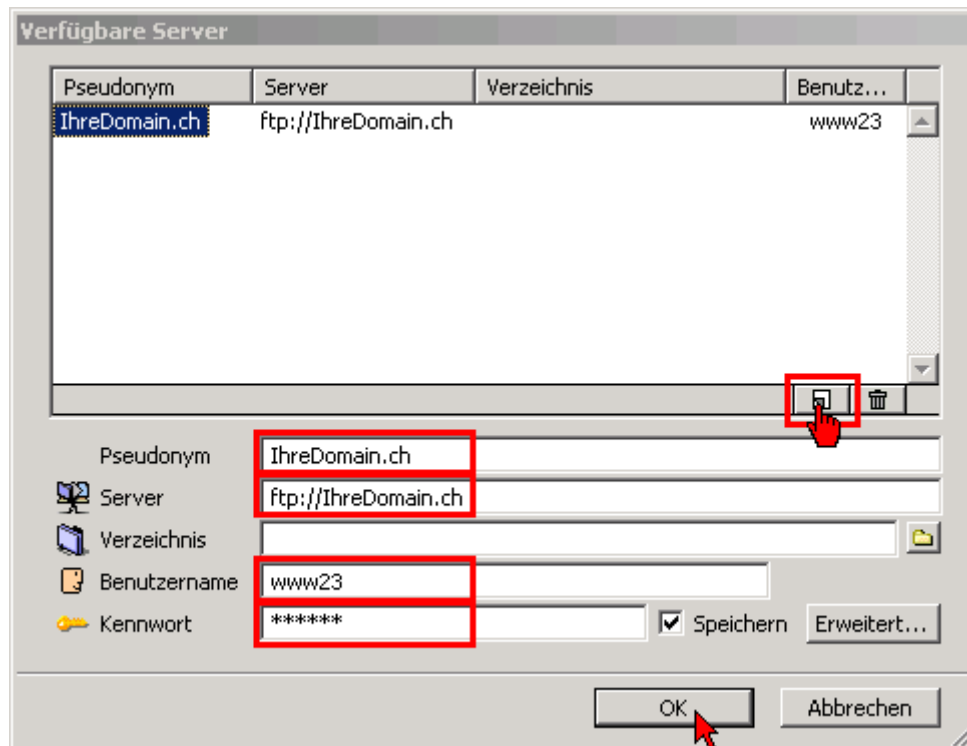
Enter your domain name without www but with the ftp:// prefix, e.g. ftp://YourDomain.ch.

(Note: Until your domain name is activated, use your RealTime host name. You will find it on your access confirmation (e.g. WL15WWW23.WEBLAND.CH)).

Under "Username" enter the username according to our access confirmation (Webserver login data, e.g. www.23).

Enter the password according to our access confirmation as "Password" (Webserver login data).

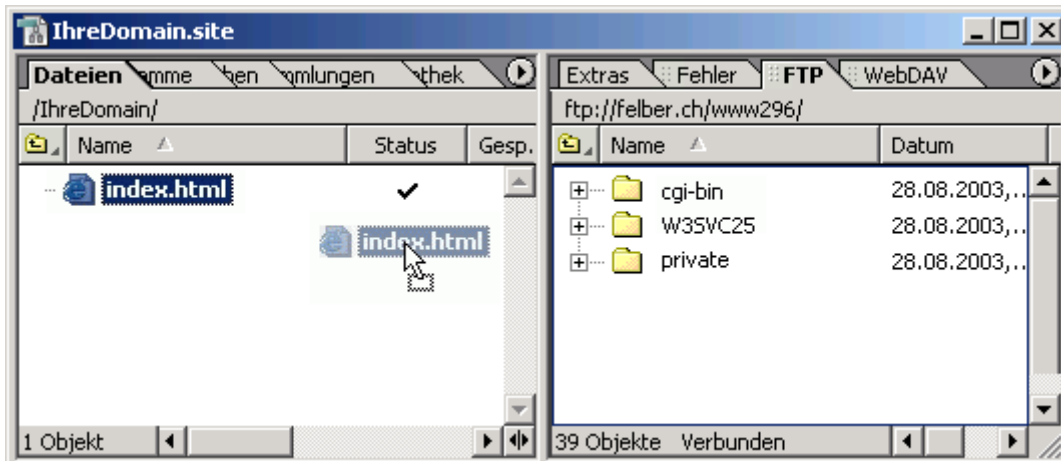
Click on "OK".



- 4 Select "Connect" under the "Website"-> "FTP-Server" menu.

Select the directories and/or files that you want to transfer using your mouse and drag them from the left window to the right. Now all of the selected files will be transferred.

Your page will be available on the internet immediately after the upload.



Attention! It may be necessary to set up a proxy for some online services. If you cannot establish a connection with our server, contact your ISP's help hotline in order to find out what you need to do in order to set up an FTP connection to upload files to an external server. Companies that have a network that directly connects with the internet use so-called firewalls for their own protection. These firewalls can be set up such that FTP connections are not possible or are only possible with highly specialised settings. In this case, you need to contact your system administrator.

CuteFTP

Please proceed as follows:

- 1 Establish an internet connection to your ISP or Online Service.
- 2 Start the FTP program CuteFTP.

- 3 Select "Site Manager" under the "File" menu and enter the following data:

You can give this connection a name under "Label for site".

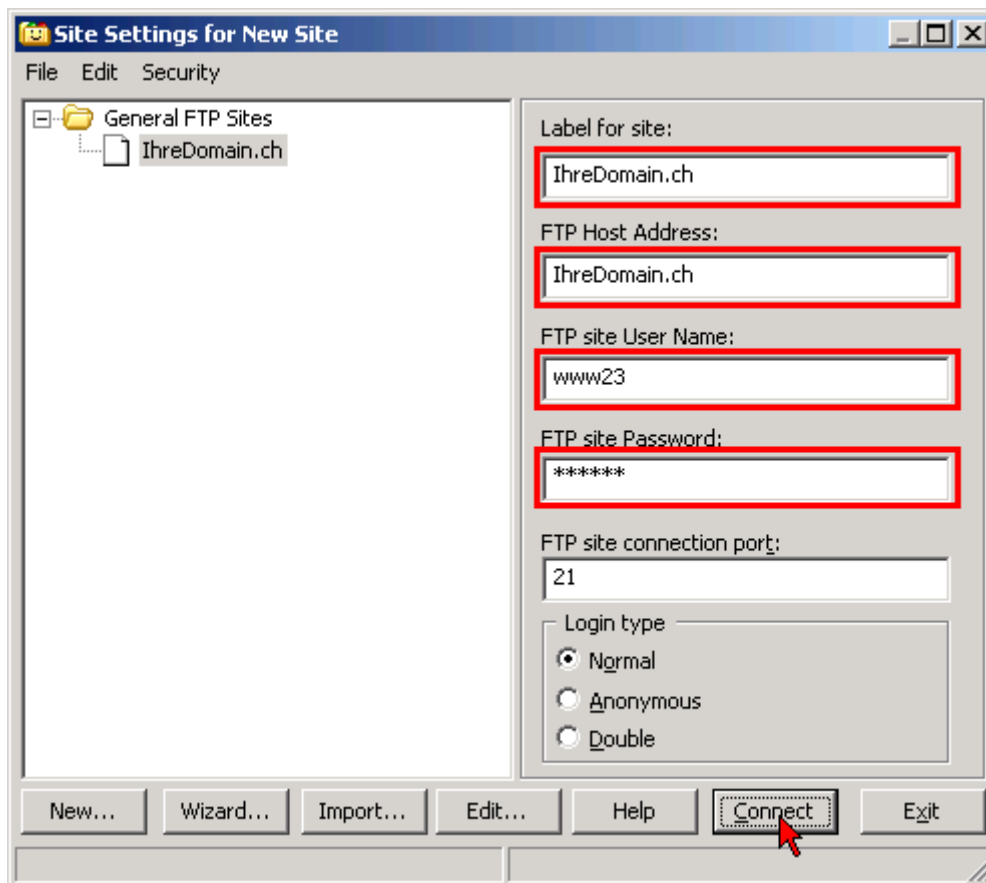
Under "FTP Host Address", enter your domain name without www.

(Note: Until your domain name is activated, use your RealTime host name. You will find it on your access confirmation (e.g. WL15WWW23.WEBLAND.CH)).

Under "FTP site User Name" enter the username according to our access confirmation (Webserver login data, e.g. www.23).

Enter the password according to our access confirmation as "Password" (Webserver login data).

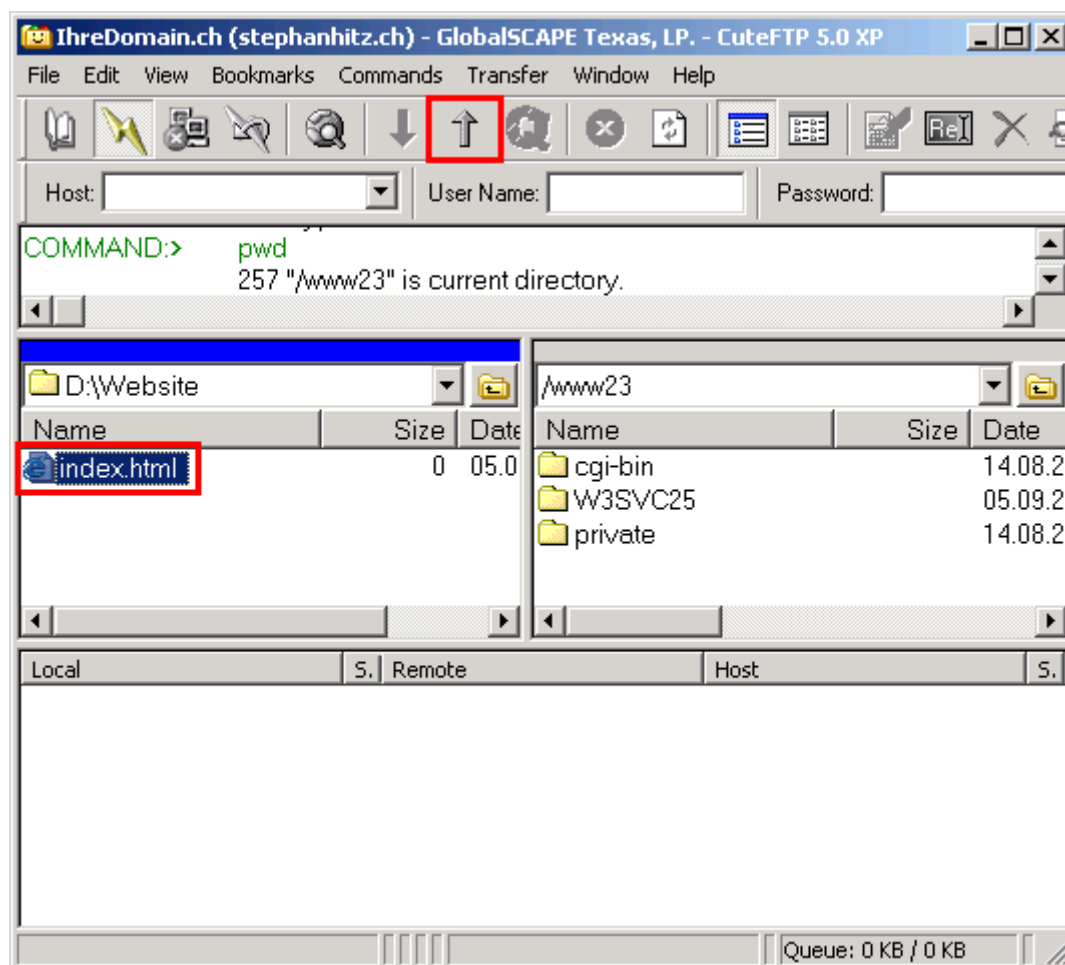
Then click on "Connect" to establish the FTP connection.



- 4 In the left window you will see the files in your local directory. On the right side you will see the directory structure of your webserver.

Select the directories and/or files you want to transfer using your mouse and click on the arrow that points from the directory on your computer to the directory on our server (generally the arrow from bottom to top).

Your pages will be available on the internet immediately after the upload.



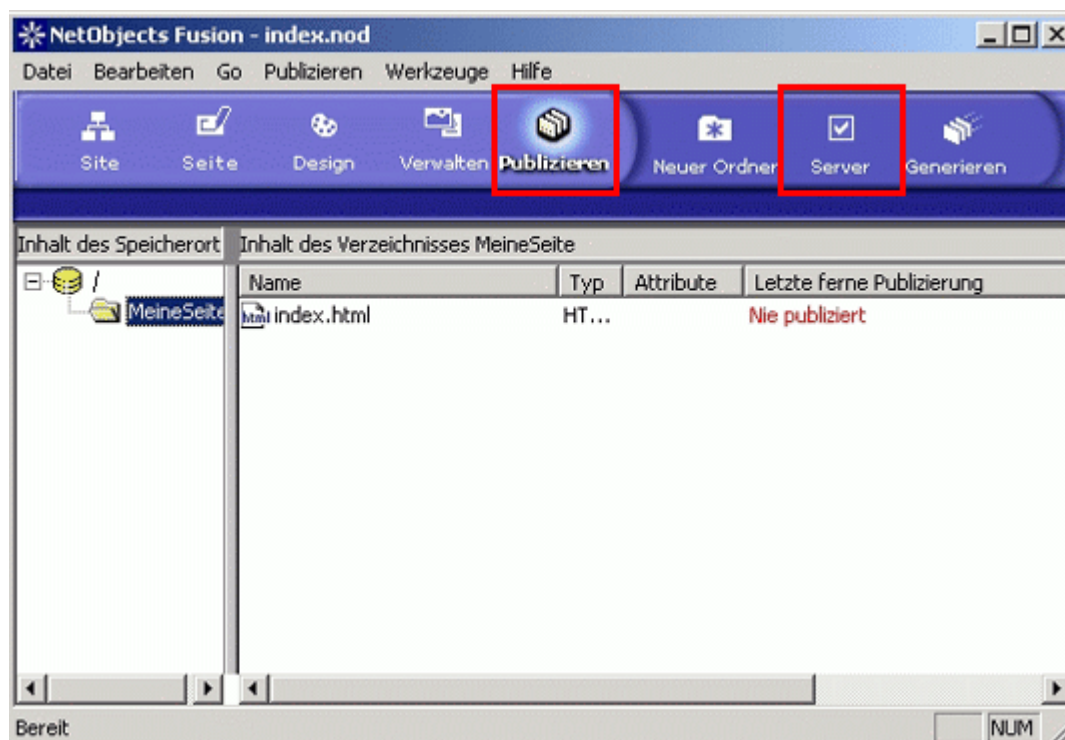
Attention! It may be necessary to set up a proxy for some online services. If you cannot establish a connection with our server, contact your ISP's help hotline in order to find out what you need to do in order to set up an FTP connection to upload files to an external server. Companies that have a network that directly connects with the internet use so-called firewalls for their own protection. These firewalls can be set up such that FTP connections are not possible or are only possible with highly specialised settings. In this case, you need to contact your system administrator.

NetObjects

Proceed as follows:

- 1 Establish the internet connection to your ISP or online service.
- 2 Start NetObjects Fusion.
- 3 Click on Publish.

Now click on Server.



- 4 Under "Type", select "Remote".

Enter your domain name without www as the FTP host.

(Note: Until your domain name is activated, use your RealTime host name. You will find it on your access confirmation (e.g. WL15WWW23.WEBLAND.CH)).

Under "User Name" enter the username according to our access confirmation (Webserver login data, e.g. www.23).

Enter the password according to our access confirmation as "Password" (Webserver login data)

Then click on "OK".

Server definieren

Server auswählen:
Ferner Publizierungsserver

Basis | Dateibenennung | Aliasnamen | Erweiterte FTP

Name: Ferner Publizierungsserver

Typ: Lokal Fern

Adresse und Benutzer

FTP-Host: IhreDomain.ch

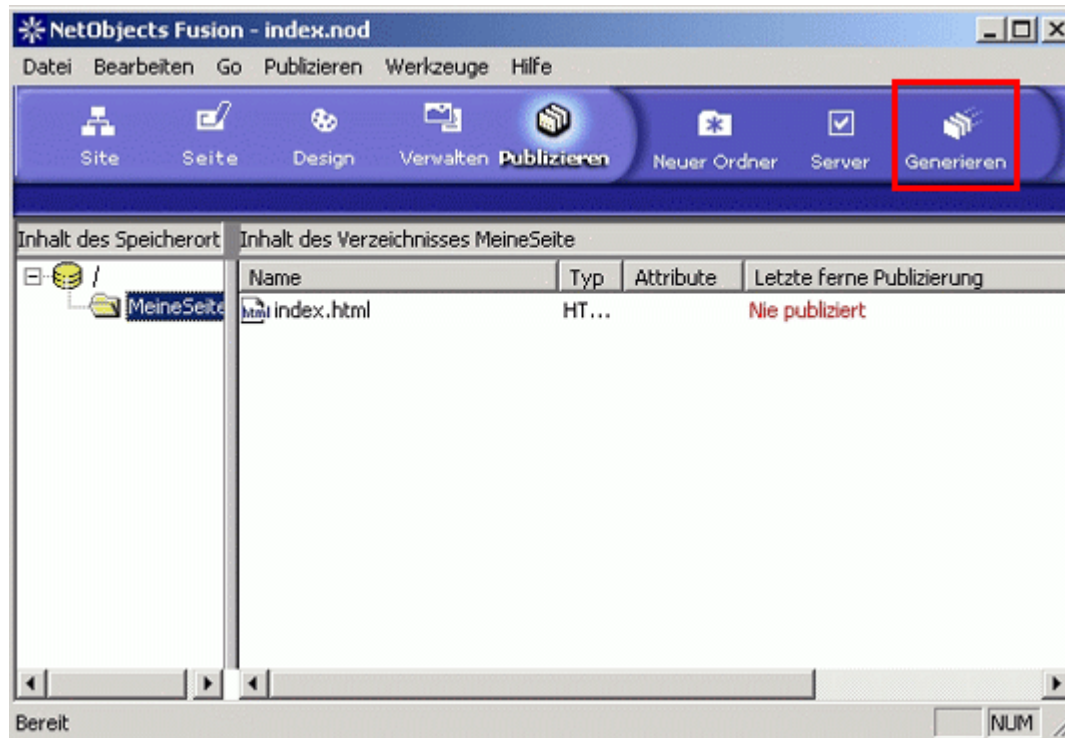
Verzeichnis:

Benutzername: www23

Kennwort: xxxxxxxx

OK
Abbrechen
Neuer Server
Server löschen

- 5 Click on "Generate".

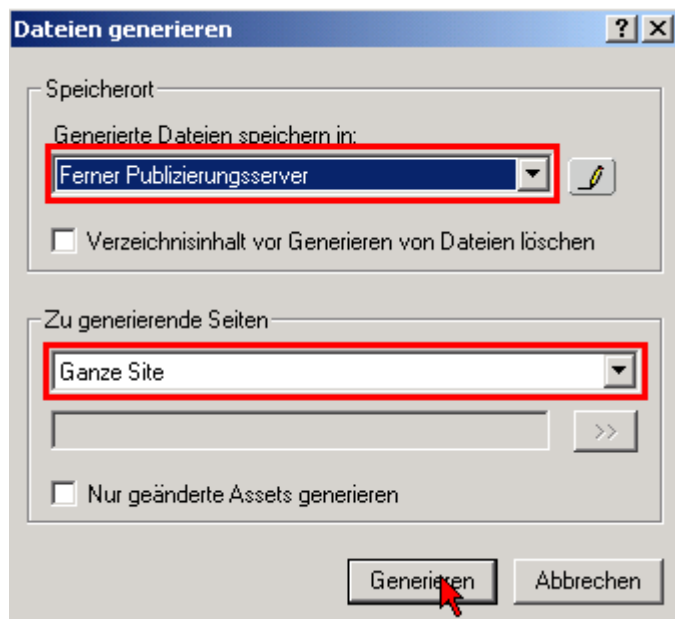


6 Select Remote Publication Server under "Save Generated Files in".

Select Whole Site in "Generate Pages".

Click on "Generate".

Your pages will be available on the internet immediately after the upload.



Attention! It may be necessary to set up a proxy for some online services. If you cannot establish a connection with our server, contact your ISP's help hotline in order to find out what you need to do in order to set up an FTP connection to upload files to an external server. Companies that have a network that directly connects with the internet use so-called firewalls for their own protection. These firewalls can be set up such that FTP connections are not possible or are only possible with highly specialised settings. In this case, you need to contact your system administrator.

Mac

Transmit

Proceed as follows:

- 1 If you do not own transmit yet, you can get the program [here](#).
- 2 Establish an internet connection to your ISP or online service.
- 3 Start the FTP-program.

4 Enter the following data::

Enter your domain name without www under "Address".

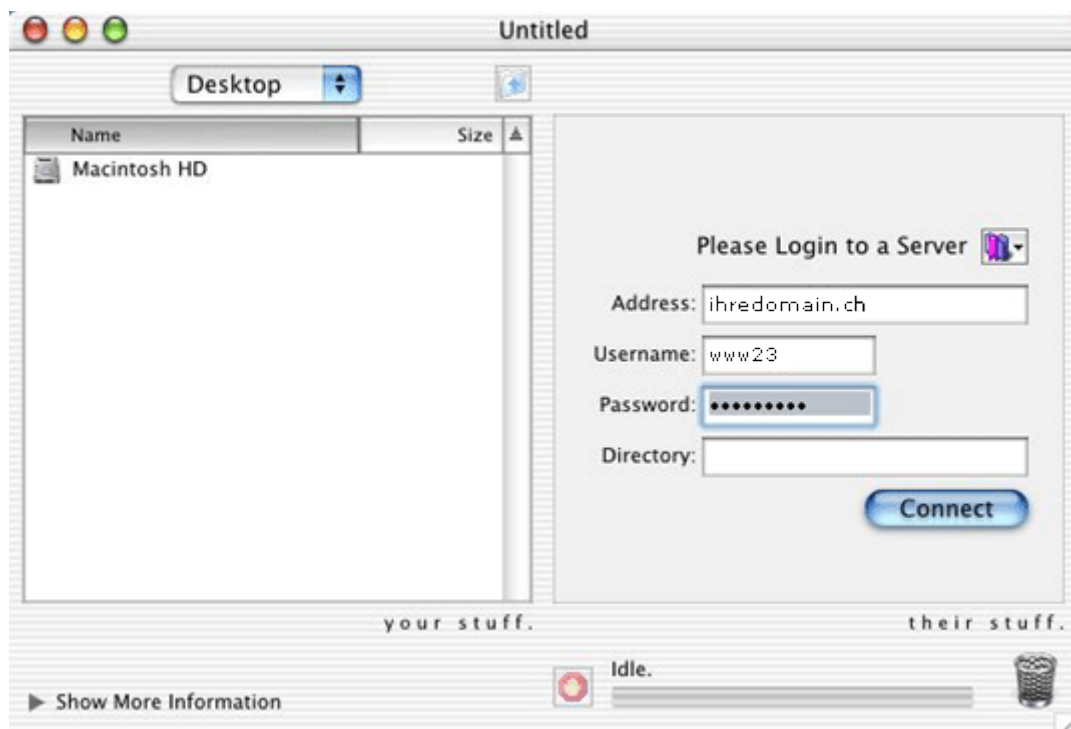
(Note: Until your domain name is activated, use your RealTime host name . You will find it on your access confirmation (e.g. WL15WWW23.WEBLAND.CH)).

Under "User Name" enter the username according to our access confirmation (Webserver login data, e.g. www.23).

Enter the password according to our access confirmation as "Password" (Webserver login data).

The field "Directory" must remain empty.

Then click on "connect" to establish the FTP connection.



- 5 In the left window you will now see the files in your local directories. On the right side, you will see the directory structure of your webserver.

Go into the left window and select the directories and files that you want to load onto your server. Drag them into the right window using your mouse.

Your pages will be available on the internet immediately after the upload.



Attention! It may be necessary to set up a proxy for some online services. If you cannot establish a connection with our server, contact your ISP's help hotline in order to find out what you need to do in order to set up an FTP connection to upload files to an external server. Companies that have a network that directly connects with the internet use so-called firewalls for their own protection. These firewalls can be set up such that FTP connections are not possible or are only possible with highly specialised settings. In this case, you need to contact your system administrator.

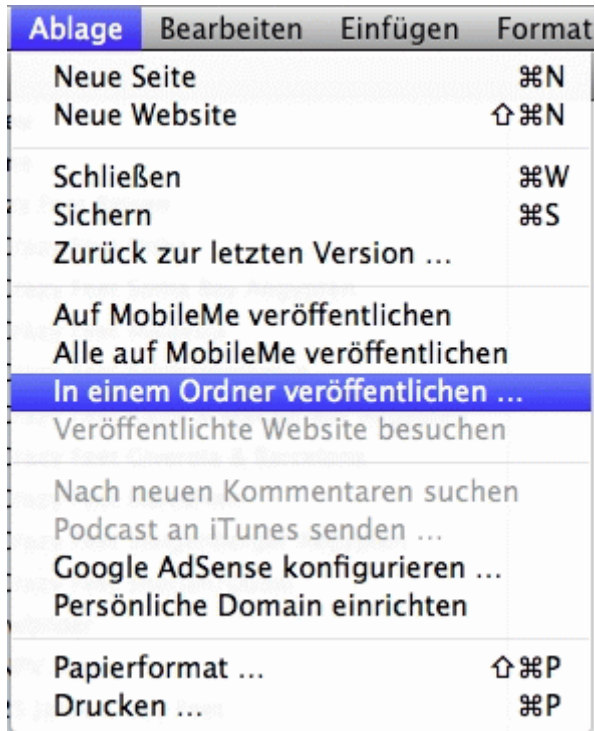
iWeb (2.0.4)

Proceed as follows:

- 1 Establish the internet connection with your internet service provider.
- 2 Start iWeb.



- 3 Select "file" – "Publish to a folder..."



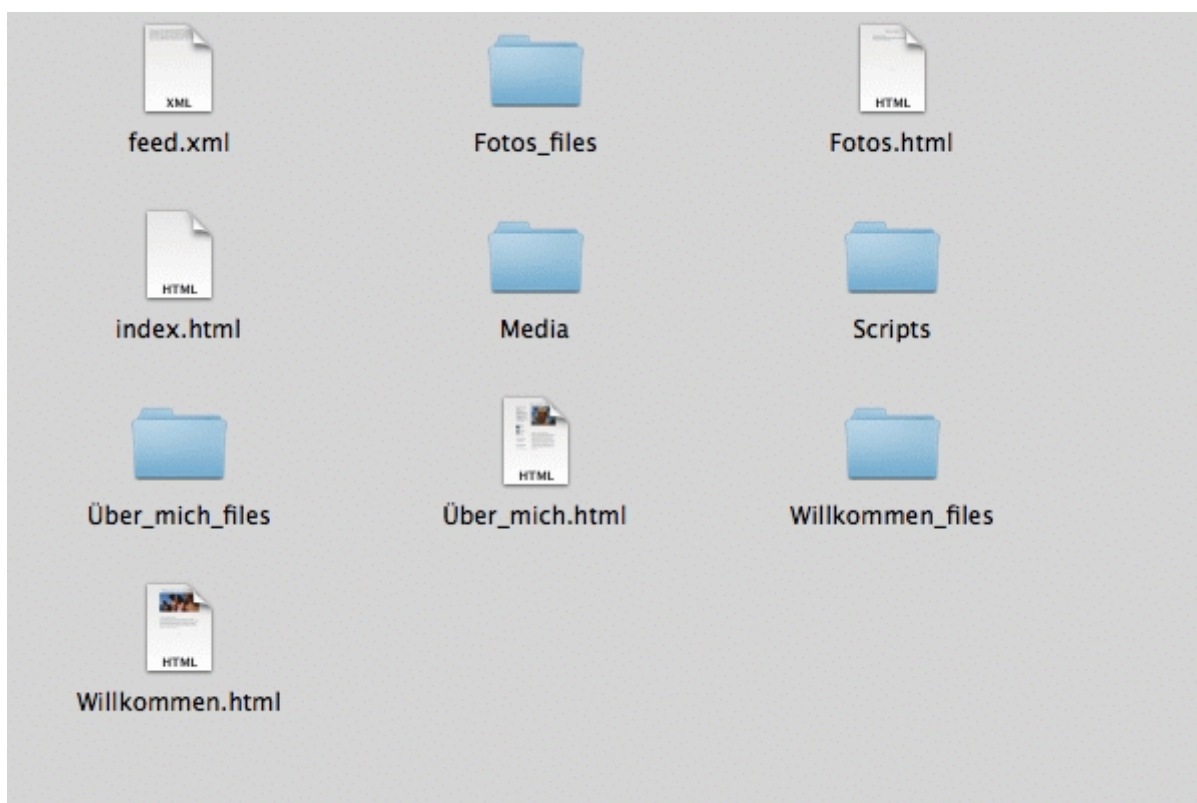
- 4 Enter your domain in the form "http://www.yourdomain.ch" as the URL for your website.

The image shows a dialog box with the following text: "Geben Sie die URL für Ihre Website ein." followed by "Beispiel: http://www.apple.com". Below this is a text input field containing "http://www.ihredoman.ch". At the bottom of the dialog, there are three buttons: "Neuer Ordner", "Abbrechen", and "Wählen".

- 5 Specify your local folder (e.g. "yourwebsite").



- 6 Now load the entire content of the local folder to your webserver on webland via FTP.



- 7 We recommended you use [FileZilla](#) for FTP-access.

iWeb (3.0.4)

Proceed as follows:

- 1 Establish the internet connection with your internet or online service provider.
- 2 Start iWeb.



- 3 Select your locally-generated Website.



- 4 Next to "publish" select "FTP-Server".
Define a name for your website (e.g. yourdomain.ch).
Leave the field "contact e-mail" empty.

Enter your domain name without www as the "server address"


(Note: Until your domain name is activated, use your RealTime host name. You will find this on your access confirmation (e.g. WL15WWW23.WEBLAND.CH).

Enter your "user name" according to our access confirmation (WebServer login data) (e.g. www23).

Enter the password (webserver login data) from our access confirmation as the "password".

You can leave the field "directory/pathway", so that you can upload your web data directly into the root directory.

Veröffentlichen



Veröffentlichen: FTP-Server
Über einen Webhosting-Dienst veröffentlichen

Name der Website: ihredomain.ch

Kontakt-E-Mail:

FTP-Servereinstellungen

Serveradresse: ihredomain.ch

Benutzername: www???

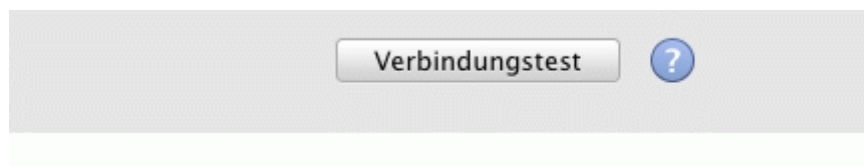
Kennwort: ●●●●●

Verzeichnis/Pfad:

Protokoll: FTP **Port:** 21

Verbindungstest

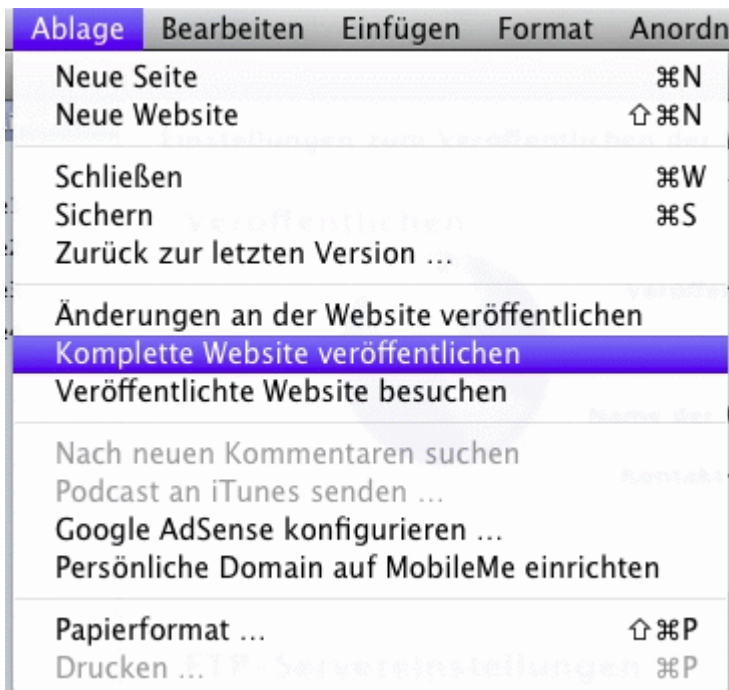
- 5 Click on "connection test" in order to test the FTP connection.



- 6 If the connection text was successful, confirm with the "OK" button.



- 7 Select "File" – publish "complete website" and your website will be uploaded to Webland Webserver.



WebDeploy

Windows

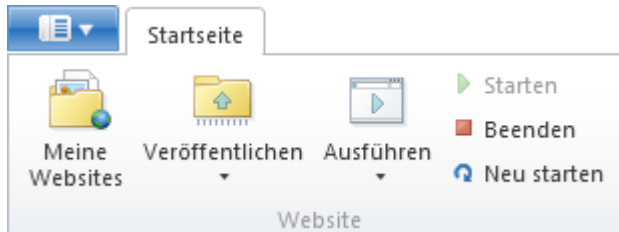
WebMatrix

Proceed as follows:

- 1 If you do not already have a copy of WebMatrix, download it using the following link: :

[WebMatrix Download](#)

- 2 Install the program following the manufacturer's instructions.
- 3 Start WebMatrix.
- 4 Select the "Publish" icon in the "Start Page" Tab.




- 5 You can enter the data manually or import the publication data, which is easier
For instructions on manual entry, continue to Step 9.
For instructions on importing publication data, proceed to the next step.
- 6 On the right side of the window, select "Import Publication Settings".

Allgemeine **Aufgaben**

 [Veröffentlichungseinstellungen importieren](#)

- 7 WebMatrix will now request the data file.
You will have received this data file as an attachment to your access confirmation.
Save this file on your computer first.
Then select the file and select "Open".

Name	Größe	Elementtyp
 wl15www23.publishsettings	2 KB	PUBLISHSETTING...

8 All data will now be automatically imported.

9 Manual entry:

You select your data under "Protocol" "Web Deploy".

Enter your domain name without www. under "Server".

(Note: Until your domain name is activated, use your RealTime host name. You will find it on your access confirmation (e.g. WL15WWW23.WEBLAND.CH)).

Under "User Name" enter the username according to our access confirmation (Webserver login data, e.g. www23).

Enter the password according to our access confirmation as "Password" (Webserver login data).

Under "Website Name" enter the username according to our access confirmation (Webserver login data, e.g. www23).

Under "Target URL" enter your domain name in the form "http://yourdomain.ch".

You may activate the "Save Password" control box if you want.

If you want to publish on the database, enter the connection string under Application.

You can find the connection string in the System Configurator under your database (c.f. also instructions "Import Publication Settings").

10 Test the connection by selecting the "Test Connection" button.

Veröffentlichen - Einstellungen

Protokoll:	<input type="text" value="Web Deploy"/>
Server:	<input type="text" value="ihredomain.ch"/>
Benutzername:	<input type="text" value="www6"/>
Kennwort:	<input type="password" value="•••••"/>
Websitename:	<input type="text" value="www6"/>
Ziel-URL:	<input type="text" value="http://ihredomain.ch"/>
	<input type="checkbox"/> Kennwort speichern
	<input type="button" value="Verbindung überprüfen"/>

Allgemeine **Aufgaben**

- [Webhostinganbieter suchen](#)
- [Veröffentlichungseinstellungen importieren](#)

- 11 A successful connection will be confirmed with "Connection Successfully Established".

Verbindung erfolgreich hergestellt

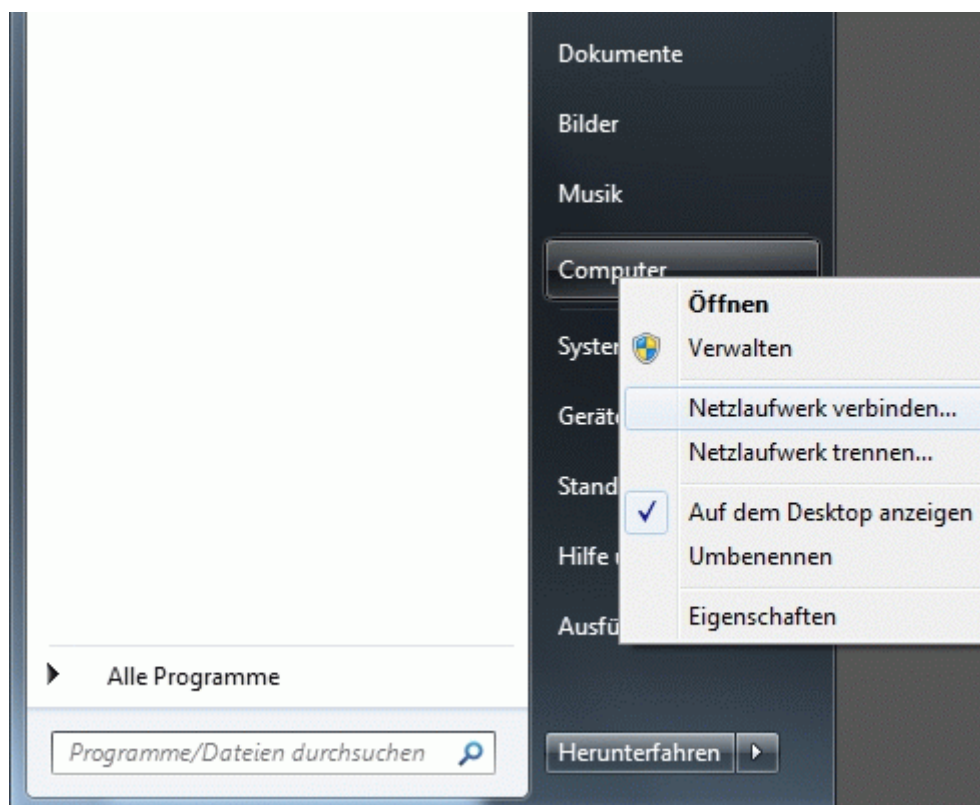
- 12 Now select "Save" to store the data..

WebDAV

Windows

Please proceed as follows:

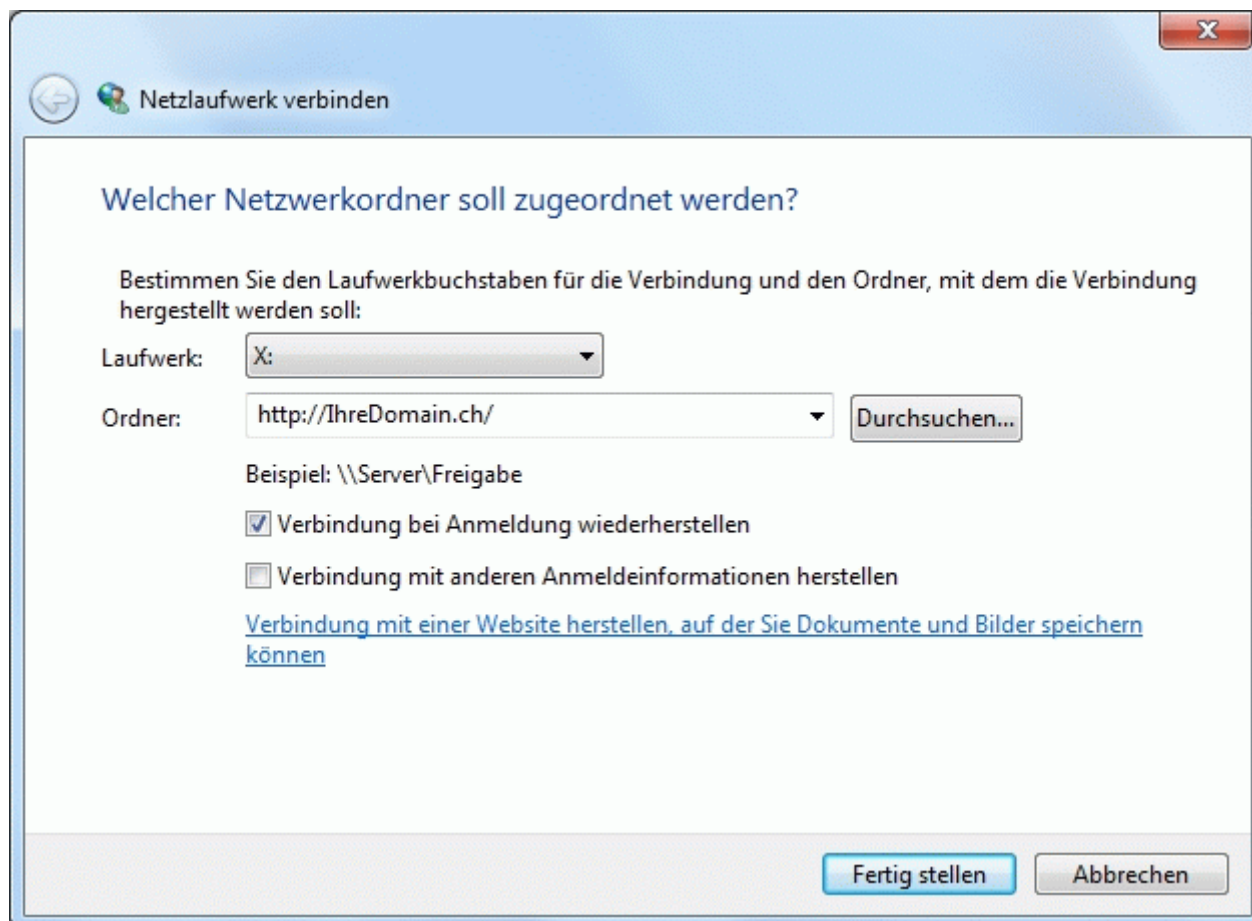
- 1 Select **Start**, right click on **Computer** and then **Map Network Drive**.



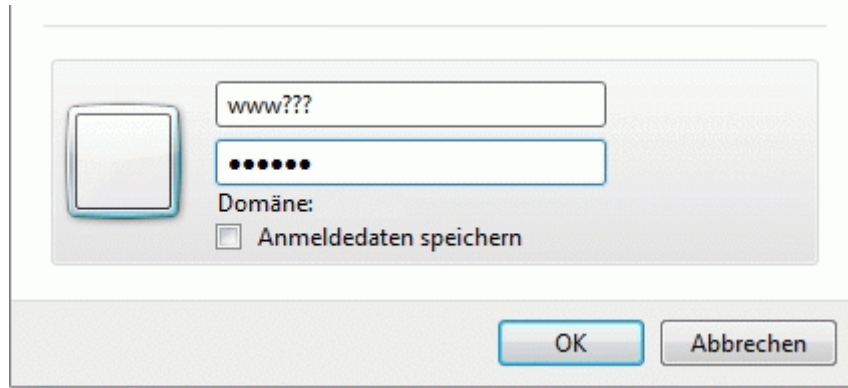
- 2 Select an available **drive letter** and enter the **folder** in the form `http://YourDomain.ch/`.

Activate the function **Reconnect at logon**.

Select **Finish**.



- 3 Enter your username and password according to confirmation of access data for your WebDAV access.



The image shows a standard Windows-style dialog box for WebDAV authentication. It features a light gray background and a white border. On the left side, there is a small square icon with a blue border. To the right of the icon are two text input fields: the top one contains 'www???' and the bottom one contains seven black dots. Below the password field, the text 'Domäne:' is displayed, followed by a checkbox labeled 'Anmeldedaten speichern'. At the bottom right of the dialog, there are two buttons: 'OK' and 'Abbrechen'.

Complete the configuration with **OK**.

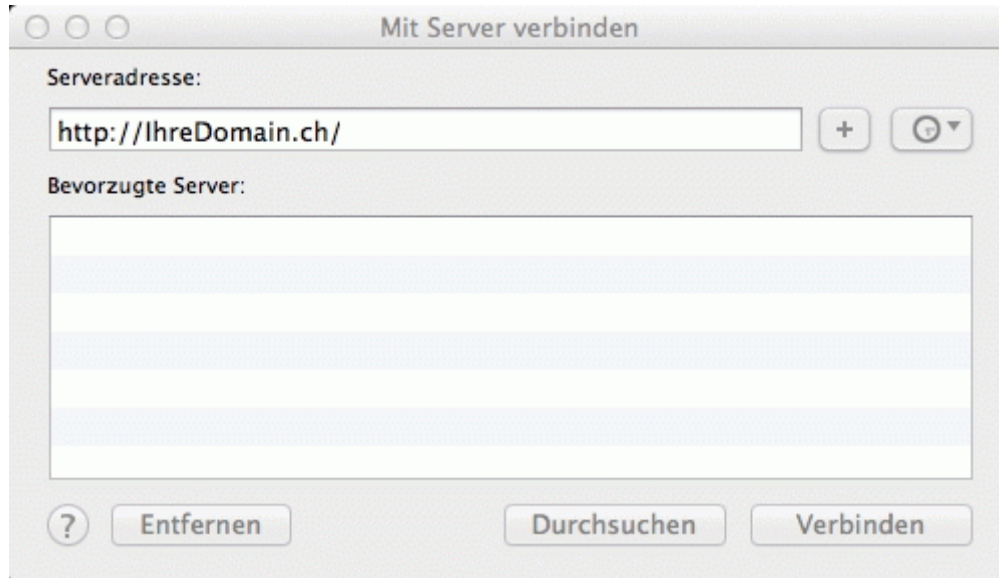
Mac

Please proceed as follows:

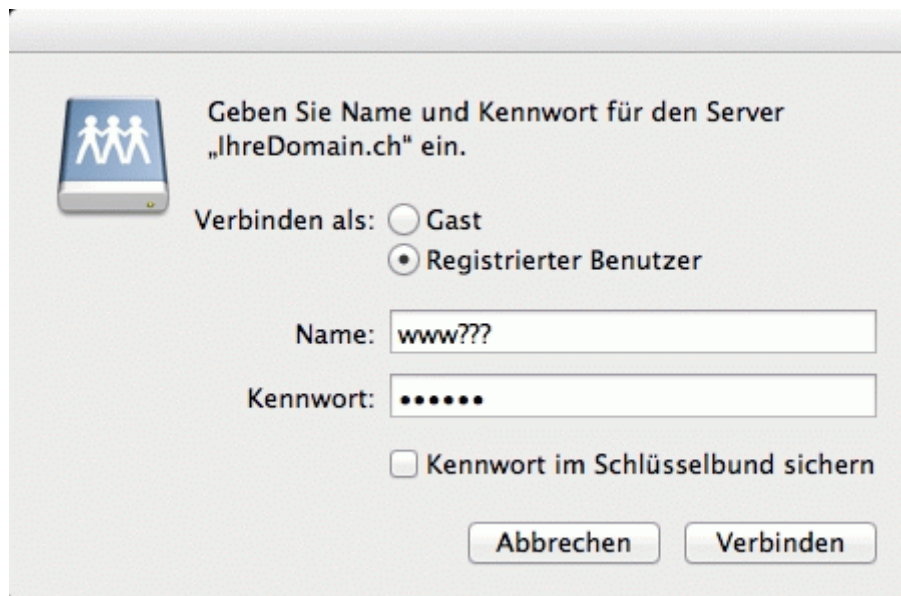
- 1 Select **Go** and then **Connect to Server**.



- 2 Enter the **Server Address** in the form `http://YourDomain.ch/`.



- 3 Enter **Name** and **Password** according to confirmation of access data for your WebDAV access.



Complete the configuration with **Connect**.



Copyright © Webland AG